

BEGE MIG[®] Encoder

Magnetic incremental and absolute encoders for precise positioning in industrial automation systems.



Inefficiency and Inaccuracy reduce Productivity

Do you want to make your machine more efficient? Are you considering an encoder, but have no room in your drive? Are you dissatisfied with your current encoder and fed up with its inaccurate feedback? Or do you find your drive's reliability inadequate?

99%

Better protection

90%

Faster installation

66%

Increased accuracy

80%

More compact

75%

Less material

15%

Higher yield

BEGE MIG Encoder: The Magnetic Flange Encoder That Always Fits



Reliable procurement

You are looking for a good encoder to fit both the customer's requirements and your budget.

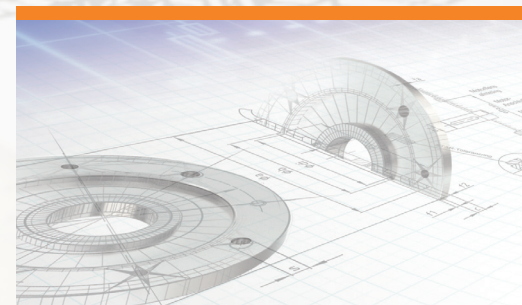
A European quality product with customizable options, manufactured by a reliable partner and with fast delivery thanks to reserved inventory.



Continuity

You strive for continuity, both towards customers and within your own company. You need an encoder from a European manufacturer that will fit any drive.

An encoder that is available now and will remain so twenty years on. You value delivery reliability and seek a professional manufacturer with years of experience in drive technology.



Precision

You want to engineer the best machine you can and find an optimal solution with the least possible headache.

More specifically, you need an accurate encoder that always fits and will improve operational accuracy.



Properties of the BEGE MIG Encoder

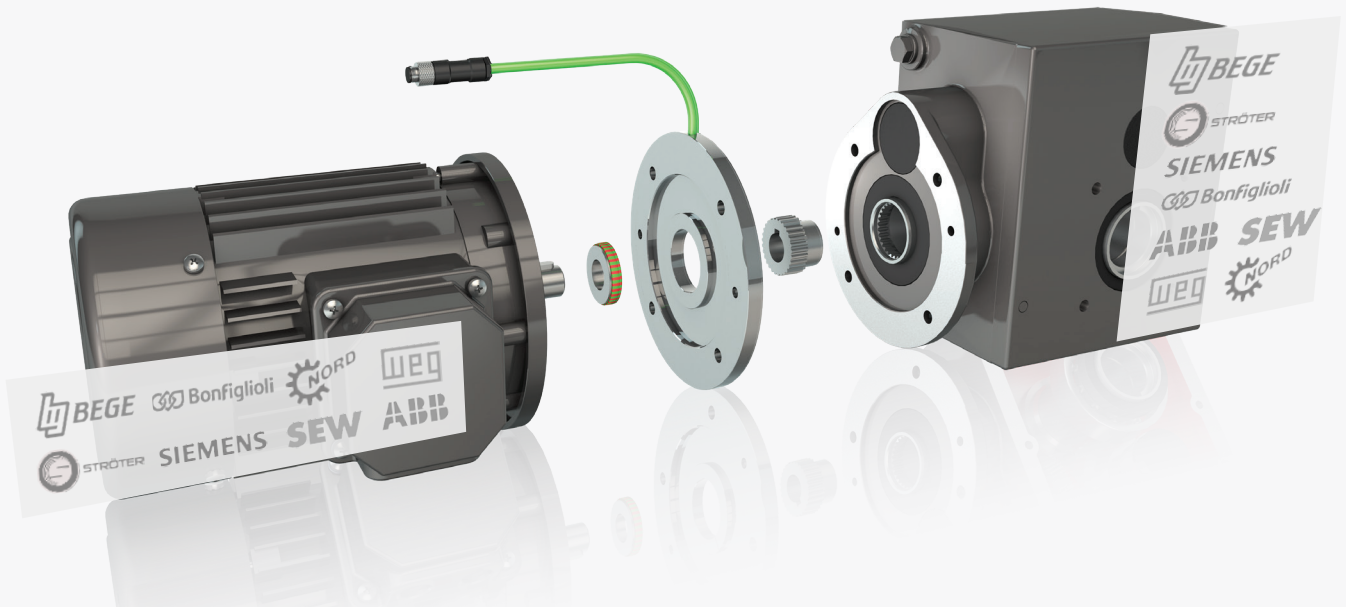
Optimize the production process and avoid redesigning your machine with the integration of the BEGE MIG encoder

This compact, dustproof and fully shock and water-resistant flange encoder fits in environments where hygiene is very important.

The BEGE encoder is compact, because it can be installed as a flange in standard IEC sizes between the electric motor and gearbox. It therefore has a flexible fitting and offers high precision.

The MIG incremental encoder makes highly accurate positioning tasks easy to perform and is compatible with virtually all controls.

High Quality Encoder to Fit All Brands of Motors and Gear Units



Testimonials by Satisfied MIG Encoder Customers

Rapid delivery

We have been using the MIG encoder in our machines pretty much as long as it's been in existence.

There's no need to worry about future availability, as BEGE guarantees access to plenty of MIG encoders at all times.

Purchaser
Food & Beverage

Corrosion resistance

In our industry, it's important that a drive will continue to function even under harsh conditions without much maintenance.

We've found the MIG to be a sturdy, reliable encoder that is well-protected against corrosion and the effects of seawater.

CEO
Marine & Offshore

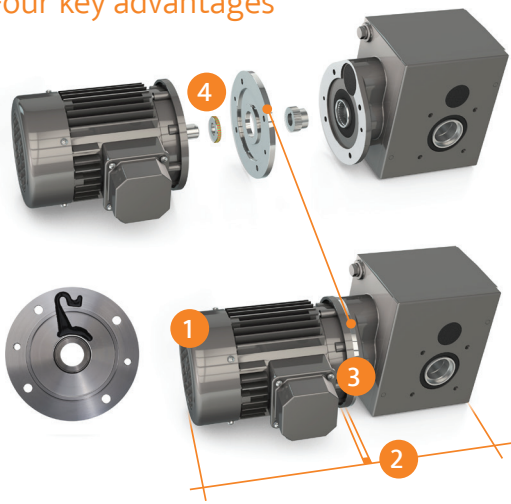
Compact and highly accurate

The MIG's extremely compact dimensions have saved me crucial installation space in our dosing machines.

What impresses me most about the MIG is that the compact size has not affected the quality of the signal, preserving its accuracy. The BEGE MIG helps us avoid overdoses, reducing product waste.

Engineer
Packaging & Logistics

Four key advantages



Fits always: Because the BEGE MIG is integrated between the motor and gear unit there are no motor modifications required e.g. extended fan cover or NDE shaft.



Incredibly compact: Machines and drive systems using the BEGE MIG barely increase in length. The encoder adds 7 to max. 15 mm to the total length.



IP67 protection: Due to the assembly between motor and gear unit, our encoder is completely protected from dirt, dust, corrosion and liquids. Even during high pressure cleaning.



Robust and shockproof: The use of a vulcanised magnet ring makes the encoder sturdy and shockproof.

BEGE MIG Encoders: The Differences

Specifications	 MIG BASIC INCREMENTAL	 MIG NOVA INCREMENTAL	 MIG AST ABSOLUTE SINGLE TURN
Flange diameter (mm)	80 – 200	80 – 450	90 – 250
Flange design	IEC, NEMA, Cover, 4-pin plug	IEC, NEMA, Cover, 4-pin plug	IEC, NEMA
IEC Size	IEC56 – 112	IEC56 – 225	IEC63 – 80
Flange thickness (mm)	7 – 9	7 – 15	7
Protection class	IP55, IP67*	IP55, IP67*	IP55, IP67*
Impulses / Resolution	1 – 64	1 – 2048	1 – 18 (bit)
Max. speed (rpm)	6000	6000 (1024 P.), 3000 (2048 P.)	6000
Connecting voltage	5 – 24 VDC	5 – 24 VDC	5 – 24 VDC

*Depending on the type of seal between motor and gearbox



Superior
quality



IEC flange
56 – 225



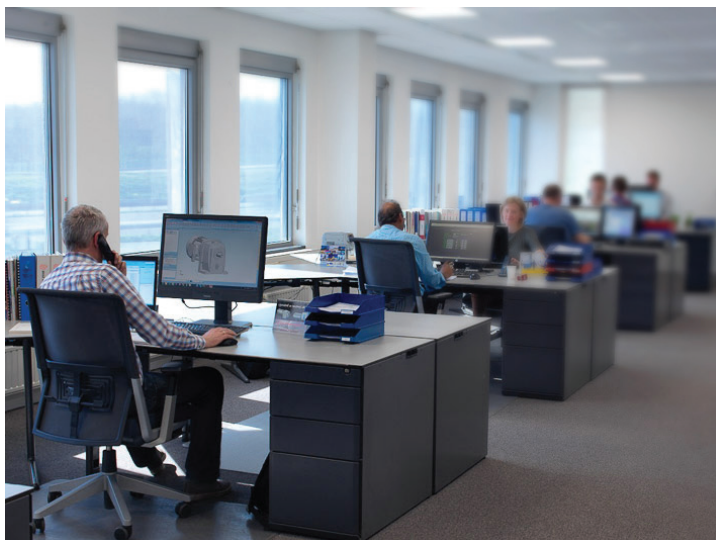
Protection
up to IP67



Ultra-
compact



Available
from stock



BEGE service benefits

- ✓ Longterm component availability
- ✓ Simple, fast equipment changes
- ✓ Short delivery times from Sassenheim (NL)
- ✓ Quick delivery of spare parts
- ✓ On-site repair and service
- ✓ EU engineered for reliable quality
- ✓ Support in your own language
- ✓ Custom solutions available

BEGE Power Transmission: Partnership for reliable Drive Systems



From standard to high-quality drives with precision encoders

BEGE: partnership for reliable Drive Systems and components

Curious about how the MIG encoder can help you optimize your drive processes?

Contact us to make an appointment.

BEGE Aandrijftechniek
Anton Philipsweg 30
+31 (0) 252 220 220
verkoop@bege.nl



BEGE-MIG.COM



YOUR DRIVE.
OUR TRANSMISSION.